



KNIPMEYER SEED
PO BOX 360
902 E 1st St
Concordia MO

VOLUME 1
ISSUE 1

Quarterly
Newsletter

theSeedScoop

SUMMER
2020

In this issue:

- Welcome to *theSeedScoop* P.1
- Fungicide Timing in Soybeans P.1
- Pioneer Seeds App P.2
- Rocket Seeds® PMZ Dry P.2
- Wheat, Alfalfa, & Inoculant Supply P.2
- Pioneer Agronomy Podcast P.3
- Plots in Progress P.3
- Corn & Soybean Fungicide FAQs P.4



Upcoming Dates

August 10th — Pioneer accounts summaries sent to customers with a balance greater than \$25.

August 15th — Entry deadline for the National Corn Yield Contest through NCGA.

September 10th — Entry deadline for the Missouri Soybean Yield Contest.

Things to Note:

Due to ongoing concerns regarding COVID-19, we will not be holding our customer appreciation dinner this year. Stay safe!

Welcome to *theSeedScoop*

We're over halfway through 2020, and what a year it's been! We hope this newsletter finds you well in a rather uncertain time. We're excited to launch our inaugural newsletter, *theSeedScoop*, as another way to share information with our customers.

You can expect to receive this quarterly newsletter in the summer, fall, winter, and spring. It's specifically designed to help keep you up-to-date on happenings within our agency, Pioneer, and the agricultural world. We'll share things like agronomy information, important dates, test plot progress and results, and any other information we think might be helpful and beneficial to your operation.

Our goal is for you to find value in its content and that it will aid you in your own goals to grow and thrive. If you ever find that this newsletter is not for you, simply text or email us to opt out of receiving this newsletter. Would you rather receive our newsletter by email? Let us know and we will add you to our newsletter distribution list.

Last, but certainly not least, we want this newsletter to be valuable to *you*. So please share your feedback and suggestions to help us improve. Let us know what information is helpful to your operation and what you'd like to see included in future newsletters. Enjoy the last part of your summer, and keep an eye out for our fall newsletter!

CORN & SOYBEAN FUNGICIDE FAQs

2020 Frequently Asked Questions — Answered by Pioneer Agronomist, Nick Monnig

1. How late is too late to apply fungicide in corn?

Agronomist answer = it depends! If there is heavy Southern Rust infestations, we might apply really late. However, we don't have that yet. The data generally says R1 to R2 is the best timing. At R3 (milk stage), you can still see a bump in yield if we have heavy disease pressure move in from here on out (we have seen that in years where Northern Corn Leaf Blight or Southern Rust come in late). At R4 (dough stage), the likelihood of seeing any economical return is pretty slim. My answer is with the conditions we have (lots of dew late in the morning, high humidity, Southern on the horizon/Northern sitting there, gray exploding, etc.) right now, you could likely still get a benefit at R3.

2. My soybeans look clean. Would you still apply a fungicide?

We are banking on what is yet to come. Not what is there now for disease. I know there isn't much there now, but I keep thinking with the dew hanging long in the morning, the high humidity, and the wet forecast, that the disease will ramp up in August/September. Most years we are not seeing a lot when we make the application, but things come in much later. I'd also think about yield potential. Some of these soybeans look fantastic, which means there is more yield to protect with a fungicide. I would definitely include the insecticide. I've started finding stink bugs the last couple of weeks. Just blowing them back alone will go a long ways for yield protection. That might be enough for the application alone.

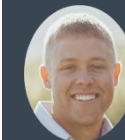
3. I Missed the R3 window on the soybeans. Should I still apply a fungicide + insecticide at R4 or is it too late?

Remember R3 is defined as a pod at least 3/16" long in the upper four nodes, R4 is a 3/4" pod in one of the upper four nodes. We always say apply a fungicide + insecticide at R3. That doesn't mean that is the only time you can apply it. That just means that in the data, that stage has shown the most yield response/consistent benefit. If you have a lot of yield potential and with the current conditions and forecast, I wouldn't be afraid to apply at the R4 growth stage if you missed the R3 window. Especially, to control those stink bugs.



CONTACT US

KNIPMEYER SEED
PO Box 360 | 902 E 1st St.
Concordia MO 64020



JEFF KNIPMEYER

660-229-2656
Jeff.Knipmeyer@plantpioneer.com



LAUREN KNIPMEYER

660-641-6675
Lauren.Knipmeyer@plantpioneer.com

Follow us on Facebook and Twitter:



@KnipmeyerSeed



FUNGICIDE TIMING IN SOYBEANS

To better understand the value of foliar fungicides in soybeans, both alone and in combination with an insecticide, Pioneer researchers conducted extensive on-farm and small-plot trials.

Researchers conducted a total of 279 trials comparing yield of non-treated soybeans to soybeans treated with a foliar fungicide, as well as 52 trials that included an insecticide in the treatment. Trials were located in 13 states and 3 Canadian provinces. Across all of these trials, the average yield response to a foliar fungicide application was 2.6 bu/acre, with a positive yield response in 83% of the trials (Figure 1). When an insecticide was included, the average response increased to 5.3 bu/acre and a positive yield response was observed in 94% of the trials.

Fungicide treatments in these trials were generally applied at around R3, which was proven to be the most effective stage for controlling diseases in several research studies.

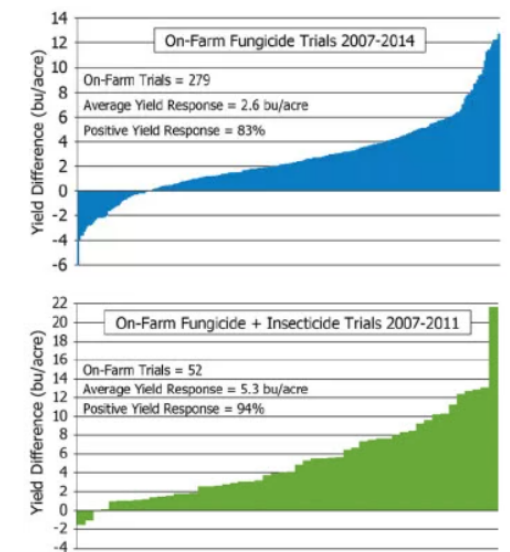
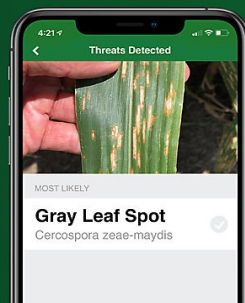


Figure 1. Average soybean yield response to foliar fungicide (top) and fungicide + insecticide (bottom) across Pioneer on-farm trials.

PRODUCT SPOTLIGHT

The **Pioneer Seeds App**



Download today.

The **Pioneer Seeds** app is a free mobile app with helpful agronomic tools and insights for your farm during every stage and season. With the Pioneer Seeds app, you'll have the data you need to ensure you have optimal planter settings, determine seeding rate, identify threats, and estimate yield. We've highlighted some of the apps tools below. Download the app today to help maximize your investment in every bag of Pioneer seed. Available for both iPhone and Android.



MY FIELDS

Add your Business Partner ID to access your customized field plans on the go and view the crops, precipitation and GDUs for each location. Analyze last year's results as you prepare for next season.



RATE ESTIMATOR

Optimize planter settings and seeding rates based on your product and location.



THREAT I.D.

Detect over 220 crop diseases across 40 crops with the snap of a photo. Identify plant diseases, pests and nutrient deficiencies so you can quickly find a solution.



YIELD ESTIMATOR

Set yield goals at planting, then capture kernel counts and estimate yields before harvest.



PRODUCT TOOLS

View Pioneer product information and seed characteristics with a quick scan of the bag tag.

P1359AM

P1359AM is a new 113 day corn hybrid suitable for productive soil types. This hybrid has excellent yield potential and makes a nice companion to P1197AM. It has good ear flex and appears to tolerate corn on corn environments well.

P44A37L

P44A37L is a group 4.4 maturity soybean. It is a yield leader in the Liberty-Link soybean lineup. It has above average SDS tolerance with excellent harvest standability. It's versatile across many environments and soil types.

Wheat

Pioneer wheat supply becomes limited this time of year. If you haven't placed a wheat order yet, please give Jeff a call as soon as possible so we can get enough supply spoken for.

Alfalfa & Inoculants

Pioneer has good supply at the moment for both fall seeded Alfalfa and silage inoculants. If you need either of these products, please let us know so we can have product on hand when you need it.

PMZ Dry

Seed Nutrition and Flow Agent

Next spring we will have Rocket Seeds® PMZ Dry on hand during planting season. PMZ Dry is a dry seed nutritional that improves early root growth and plant vigor, used as a talc and graphite replacer. It provides additional nutrition to the seed, further assisting plants in withstanding early-season cold and water stress while progressing through the vegetative growth stage.

KEY BENEFITS

- For use on corn, wheat and all other major row crops
- Talc and graphite replacement
- An excellent seed-drying source; improves lubrication and flowability
- Creates longer, more developed root system
- Improves resistance to early-season cold and water stress
- Improves planter performance by ensuring only a single seed is picked up and fed to the planter
- Reduces skips & seed bridging
- Easy scoop, pour and equipment options simplify applications
- Recommended for soils with locked up, unavailable phosphorus

Pioneer® GrowingPoint® Agronomy Podcast

Missouri Pioneer field agronomists, Nick Monnig and Jaime Farmer, have many podcasts discussing a variety of topics related to agronomy, corn, soybeans, and forages. With podcasts, you can listen anywhere, anytime. Whether walking from your house to the shop, or in the tractor and on the road.

Visit <https://podcasts.pioneer.com> on any device to get started. Once on the website, simply browse podcasts by clicking "Shows" on the top right menu bar. From there, you'll be able to listen, download and share. Be sure to choose Pioneer "Growing Point Agronomy – Missouri" to listen to our **local** agronomists.

⇒ Click or tap the play button to listen instantly, or download on your device to listen now or later.

PLOTS in PROGRESS

We have 3 corn test plots and 4 soybean test plots this year. We've listed planting information below. We will publish yield results in our fall newsletter. If you would like to walk through a plot, please feel free to reach out to Jeff.

CORN	CORN	CORN
Planted: 4/8/20 Population: 32K Tillage: Conventional Hybrids: • P1077AM • P1108Q • P1197AM • P1213AM • P1359AM	Planted: 5/2/20 Population: 30.6K Tillage: Conventional Hybrids: • P0977AM • P1077AM • P1108Q • P1197AM • P1213AM • P1244AM • P1359AM • P1380AM • P1548AM	Planted: 5/7/20 Population: 31.5K Tillage: Conventional Hybrids: • P0977AM • P1077AM • P1108Q • P1197AM • P1213AM • P1244AM • P1359AM • P1380AM • P1548AM

SOYBEAN	SOYBEAN	SOYBEAN	SOYBEAN
RR2Xtend Planted: 5/11/20 Population: 160K Tillage: No Till Varieties: • P37A27X • P39A45X • P39A58X • P40A47X • P42A96X	Enlist/Liberty Planted: 5/19/20 Population: 150K Tillage: Conventional Varieties: • P38A49L • P38T05E • P39T61SE • P41T07E • P44A37L	Enlist/Liberty Planted: 5/19/20 Population: 163K Tillage: No Till Varieties: • P38A49L • P38T05E • P39T61SE • P41T07E • P44A37L	RR2Xtend Planted: 6/8/20 Population: 160K Tillage: No Till Varieties: • P39A45X • P39A58X • P40A47X • P42A96X • P45A02X



Kendall Knipmeyer (13 months)

Our daughter, Kendall, is "good" help sorting seed. She can't wait to ride in the combine this fall!

Our children and grandchildren are the future of agriculture! Do you have any special kiddos in your life that love helping on the farm? We'd love to see a picture and feature them in *Kids Corner*. Text or email a photo to Lauren to be featured in a future newsletter!